



Features of Coastlines

twinkl



Aim

- I understand how coastal features are formed.
- I can identify coastal features of the UK.

Success Criteria

- I can name some features of a coastline.
- I can explain how some coastal features are formed.

Types of Weathering



**Physical
Weathering**

**Chemical
Weathering**

**Biological
Weathering**

Acidic rainwater falls onto rocks such as limestone. Over time it will dissolve some of the rock.

Roots from trees and other plants may grow into or under rocks with such force that they can cause damage or even split the rock in two!

Rainwater collects in a crack in the rock. It freezes and forces the crack to widen. This freeze-thaw cycles repeats.



What Is a Coastline?

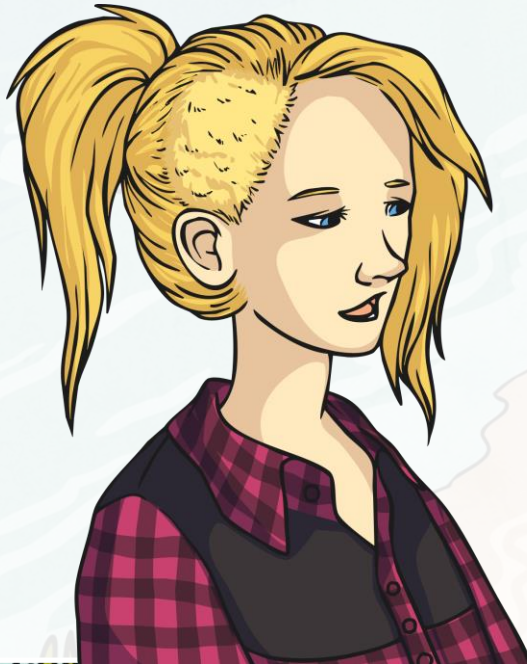


What is the definition of a coastline?

What would you expect to see at the coast?

What sorts of activities happen there?
Human Geography

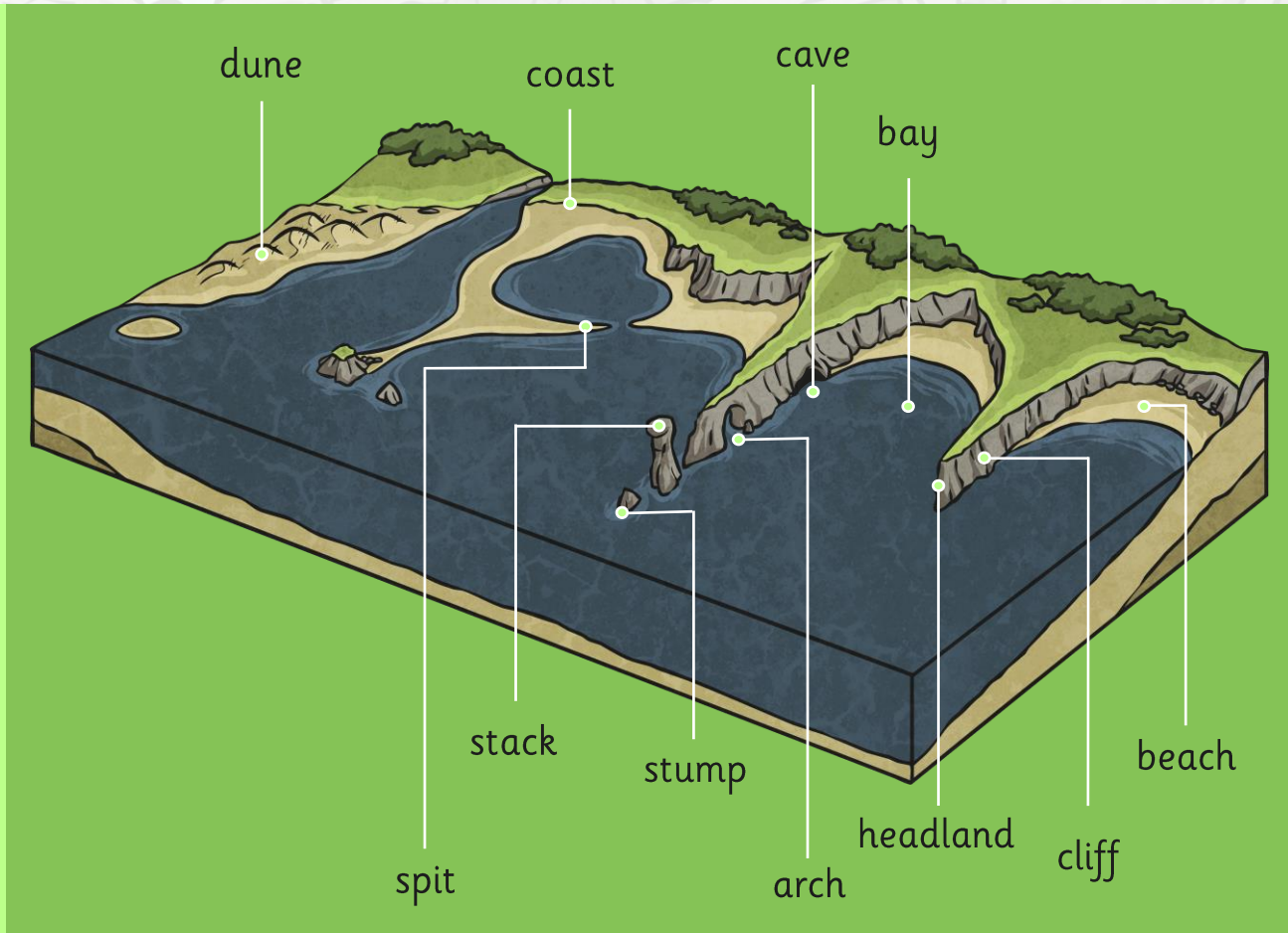
What natural features might you see?
Physical Geography



Features of Coastlines



coast
bay
headland
beach
dune
cave
cliff
arch
stack
stump
spit



Features of Coastlines



Bay and Headland

If a coastline is made of sections of harder and softer rock, these will erode at different speeds when attacked by waves.

Where the softer rock has eroded more quickly, bays form.

The harder rock erodes more slowly, and forms headlands surrounding bays.





How Bays and Headlands Form

Sort the captions into the correct order. Create a cartoon strip to show how bays and headlands are formed.

1.	2.
3.	4.

The harder rock is not eroded as quickly and forms a headland separating the bays.

The coastline is made up of sections of softer and harder rock.

The softer rock is eroded more quickly than the harder rock.

Waves attack the coastline separating the bays.